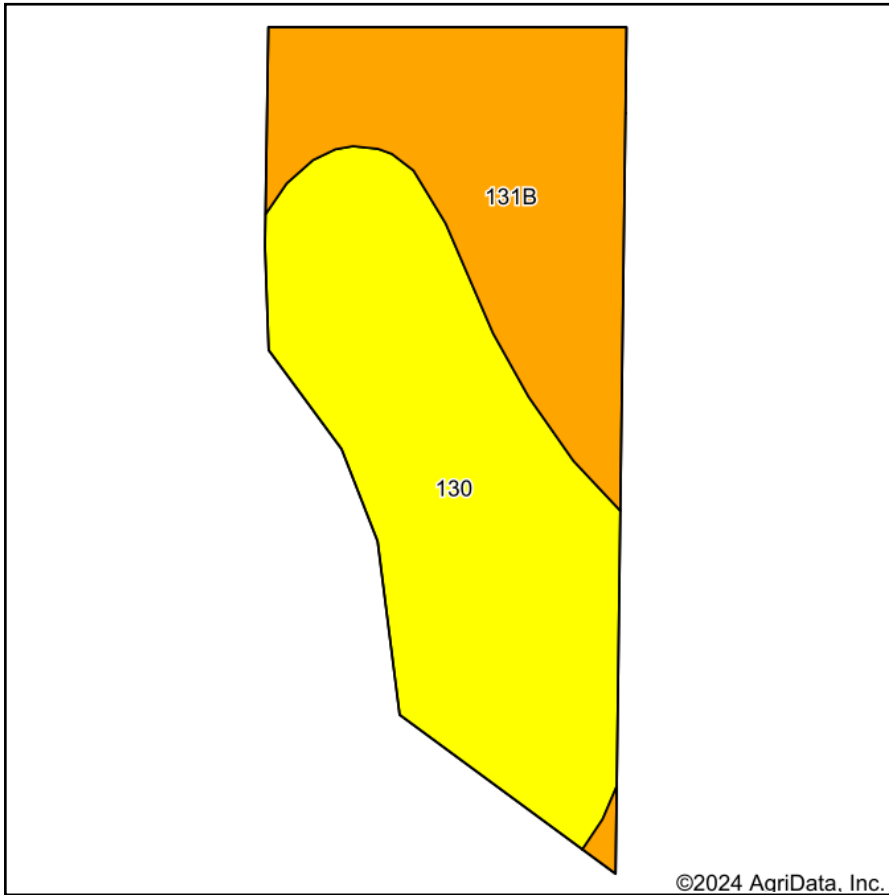
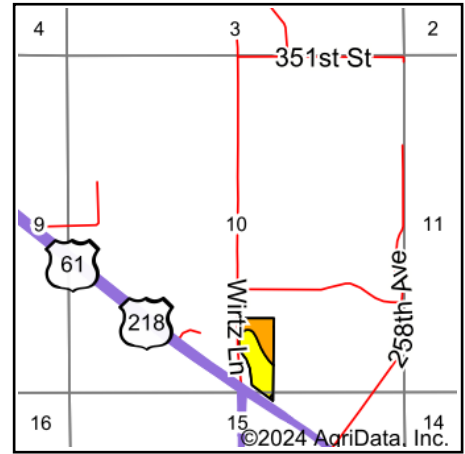


Soils Map



Soils data provided by USDA and NRCS.



State: **Iowa**
 County: **Lee**
 Location: **10-65N-5W**
 Township: **Keokuk**
 Acres: **12.26**
 Date: **2/5/2024**



Maps Provided By:



© AgriData, Inc. 2023

www.AgriDataInc.com



Area Symbol: IA111, Soil Area Version: 32

Code	Soil Description	Acres	Percent of field	CSR2 Legend	Non-Irr Class *c	CSR2**	CSR	
130	Belinda silt loam, 0 to 2 percent slopes	7.34	59.9%		IIIw	47	63	
131B	Pershing silt loam, 2 to 5 percent slopes	4.92	40.1%		IIIe	70	67	
Weighted Average						3.00	56.2	64.6

**IA has updated the CSR values for each county to CSR2.

**IA has updated the CSR values for each county to CSR2.*c: Using Capabilities Class Dominant Condition Aggregation Method